

How to start REVIVE without BIOS Setting.

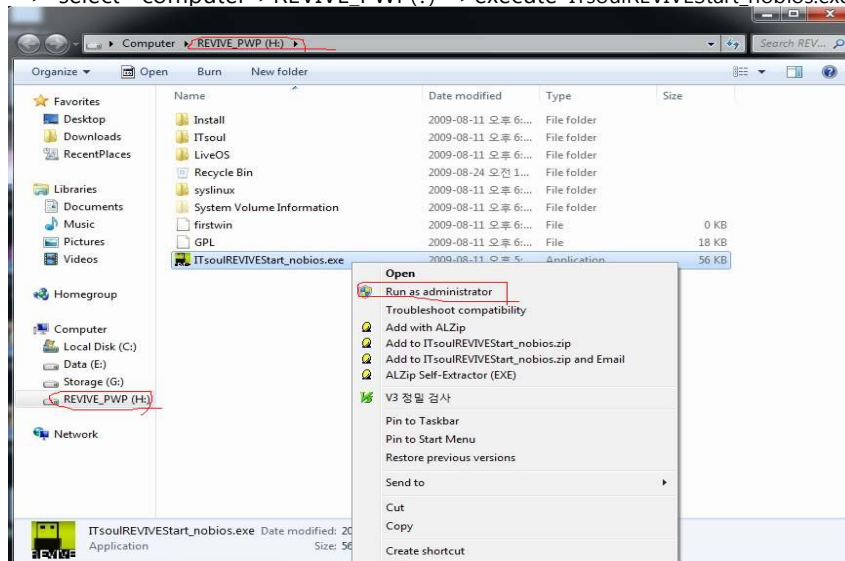
(If you can use USB Booting, You can skip 2-4 step.)
(Error case description : <http://recoveryos.com/support.php>)

1. Plug a USB device to a computer. and then you can see the explorer program.



2. Execute ITsoulREVIVestart_nobios.exe.

*if you can't see the explorer as the following, You must run explorer
-> select "computer->REVIVE_PWP(?) ->execute ITsoulREVIVestart nobios.exe.

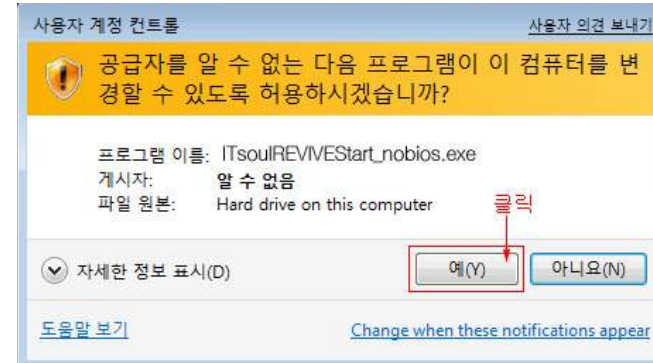


In case of **Windows XP**, just double click "ITsoulREVIVestart_nobios.exe".

(If it doesn't exist .net 2.0, First, installation process is progressed.)

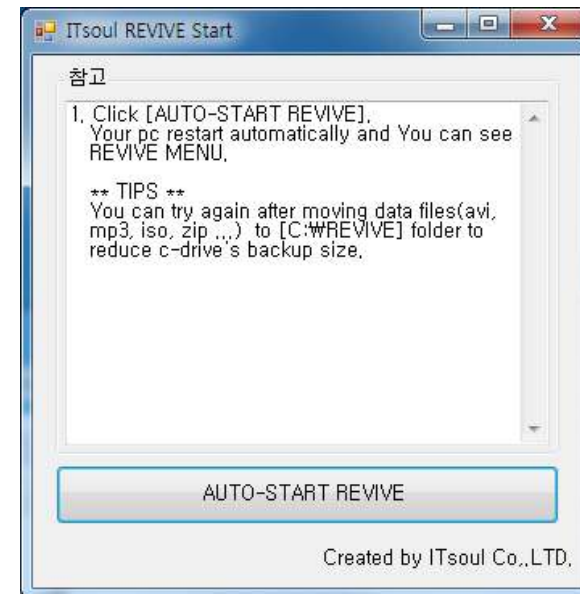
In case of **vista and window7**, Click the right button of mouse
on ITsoulREVIVestart_nobios.exe and do "run as Administrator".

If you see the following message box, Click the **Yes(Y)** button.



3. Click the "AUTO-START REVIVE".

computer will be rebooted automatically.

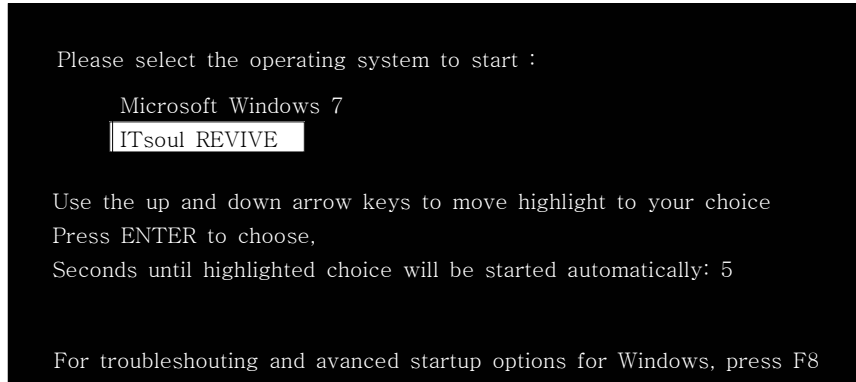


※ Step 2 and 3 must be executed only one when you use first.
After that, Execution Sequence is as the following :
Step 1 -> 4 -> 5.

* Detail manual : Read Manual_portablewin.pdf file on usb.

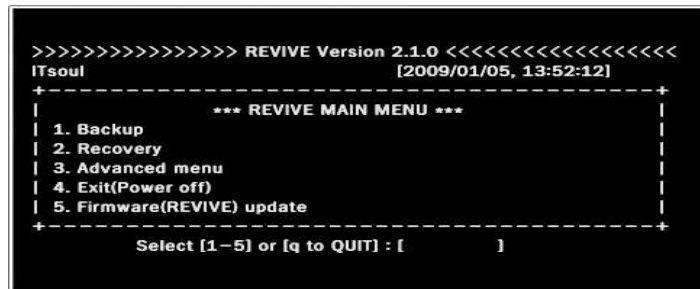
4. Selection boot menu.

After rebooting, you can see the following screen(5 seconds).
If you can't do anything, computer will be turned on by windows.
If you choose "ITsoul REVIVE" using "Arrow key" and stroke "Enter",
Computer will be turned on by REVIVE.



5. Now, you can see the following screen.

If you want to **backup your system**, Just **press key "1" and stroke "Enter"**.
After finishing job, PC will be powered off automatically.
If you want to recovery your system, Just **press key "2" and stroke "Enter"**.
After finishing job, PC will be powered off automatically.



* Detail manual : Read Manual_portablewin.pdf file on usb.

* ATTENTION

In case of "MBR sector" or harddisk's physical damage, You can't use this function.

Instead of that, Use [USB Booting Guide]

USB Booting Guide

Dell series : F12 -> Usb Storage Device -> Enter
Dell inspiron series : ESC -> USB Storage -> Enter
HP : F9 -> LG XTIC(USB disk) -> Enter
SONY : F12 -> Hard Disk -> USB HDD0 -> (LG XTIC) -> Enter
Asus : F8 -> USB:(LG XTIC) -> Enter
MSI : F11 -> USB HDD -> Enter
SAMSUNG : ESC -> USB HDD : LG XTIC -> Enter
LG : F11 -> LG XTIC(USB disk) -> Enter
TG(AVERATEC) : F11 -> USB:(LG XTIC) -> Enter
AMI BIOS : F11 -> USB:(LG XTIC)
AWARD/PHEONIX BIOS : F12 -> Hard Disk -> USB HDD0 -> (LG XTIC)

Requesting to PC's manufacturer :

Ask a customer service of PC's manufacturer, i.e. "How can I boot computer from a USB device?"

How to File Backup (Only REVIVE-Office Version)

After finishing backup your system, As you show the following screen, run explorer -> select [computer -> REVIVE_PWP(?) -> execute FileBackup.exe in FileBackup_install



※ To see the manual, Click [Howto] button on FileBackup program.